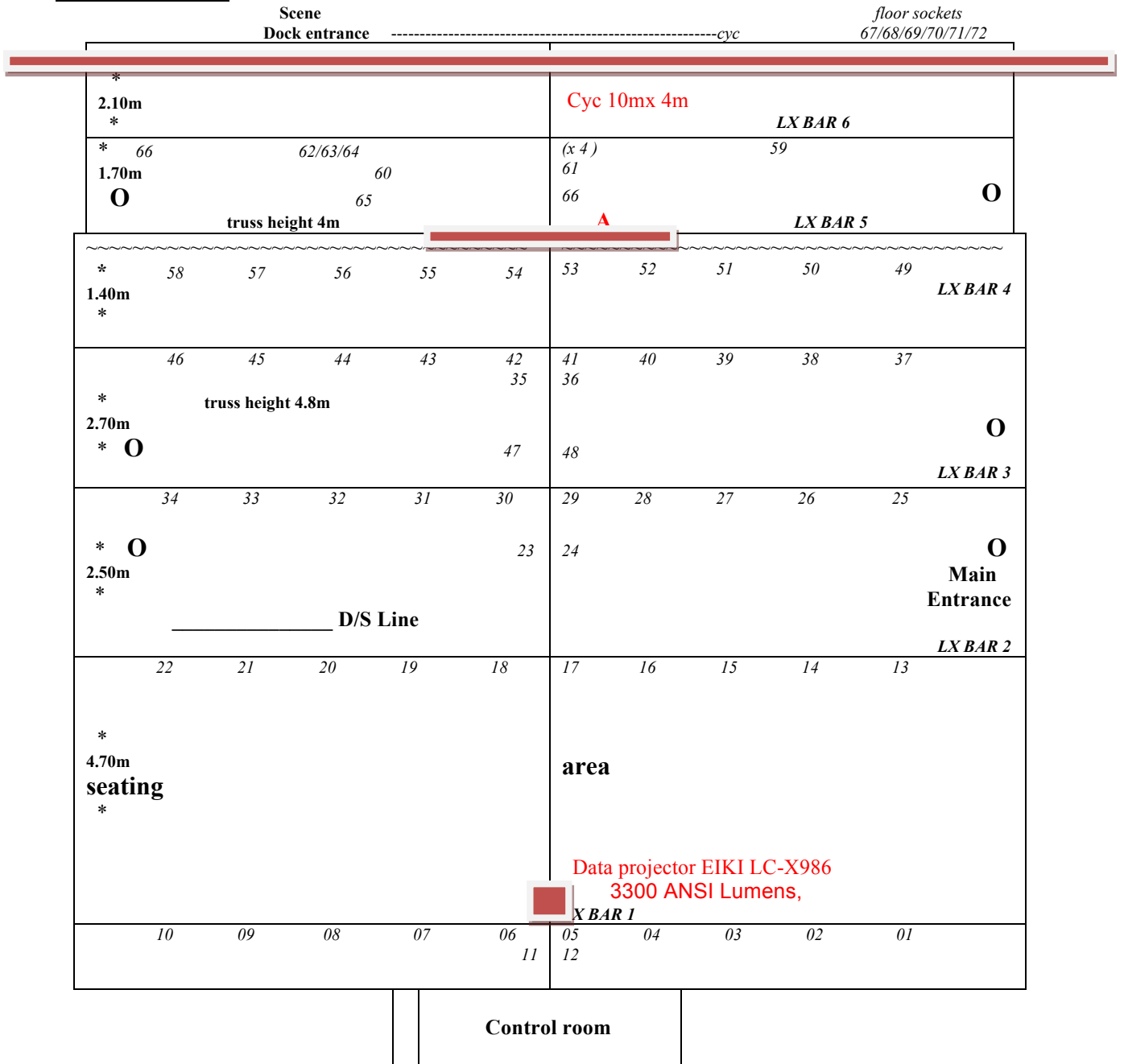


Pre-wired truss



Plan not to scale

~~~~~ Blacks on track (surround stage area)

**O** Side bars (Heads / mids / shins)  
 01 socket and channel numbers

NOTE: Truss height 4.8m up to LX bar 5 , then drops to 4m. Total stage depth : 9.6m

**A** Motorized projection screen  
 12foot wide (366cm) x 11' 6'' (350cm) high with a 2inch black boarder 38 inches (97cm) from floor  
 Distance from projector to motorized screen 11m 30 cm / to cyc 15m.